

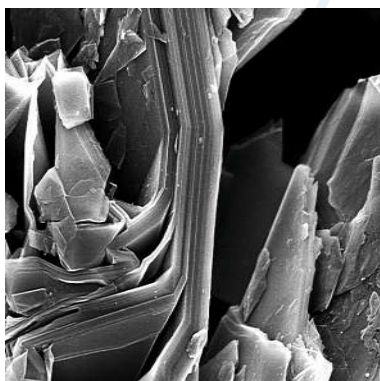


Surface Enhanced Flake Graphite

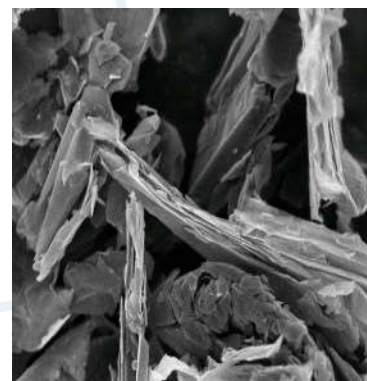
Surface Enhanced Flake Graphite (SEFG) is a natural graphite-based material composed of particles that have flake morphology. This morphology is typically much thinner than those observed in conventional flake graphite.

This unique graphite has surface characteristics that give it:

- *Enhanced lubricity*
- *Extremely efficient oil absorption*
- *Enhanced conductivity*
- *Excellent source of graphite Nano Platelets*
- *Enhanced surface area / twice that of similarly sized conventional flake graphite*



Conventional Flake



Surface Enhanced Flake

Typical Properties

Grade Density	Carbon (%)	Size	Surface Area (m ² /g)	Sulfur (%)	Resistivity (Ω cm)	Bulk (g/liter)
3780	98	1/8" x 0	19.0	0.329	0.026	176.7
3807	98	55%, -325 mesh	17.3	0.025	0.039	136.2
3806	98	20 micrometer	22.7	0.022	0.053	168.2
3805	98	15 micrometer	25.3	0.018	0.058	167.0
3775	98	9 micrometer	27.0	0.067	0.058	167.0